



# MATRIX

## TECHNICAL ASPECT

Construction: Wilton

Composition: 100% Wool/ Loop pile

Secondary Backing: Jute/ Latex

Pile Height: 5.0mm

Total Height: 7.0mm

Pile Weight: 1.300g/m<sup>2</sup>

Total Weight: 2.860g/m<sup>2</sup>

Roll Width: 400cm

Use: Heavy Residential/ Medium Commercial

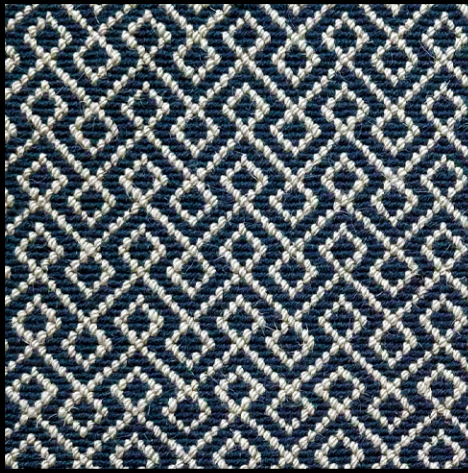


Level 1, 68 Sophia Street  
Surry Hills, NSW 2010

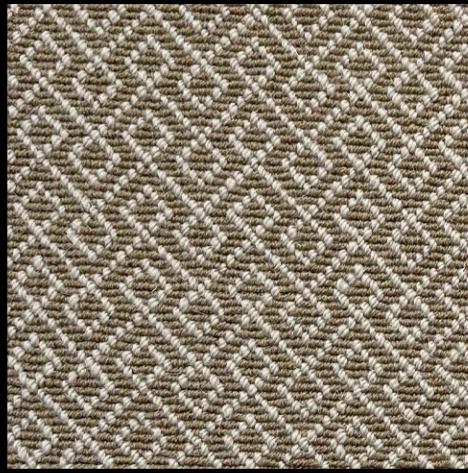
1800 239 237 (1800 2FYBER)  
info@fyber.com.au  
@fyber\_flooring

www.fyber.com.au

# FYBER



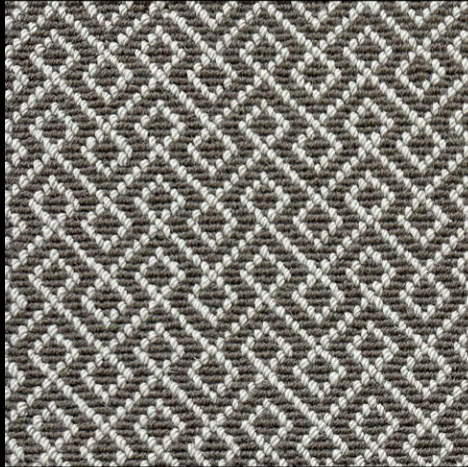
5 COBALT



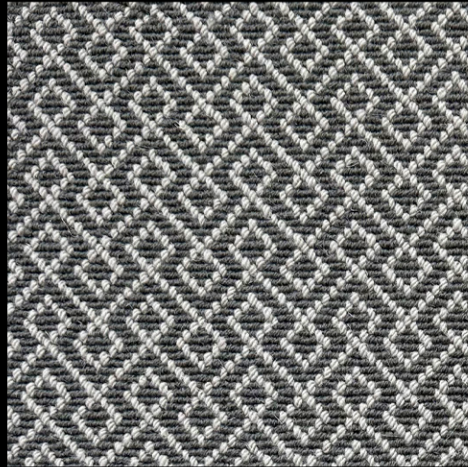
4 GOLD



2 PLATINUM



3 PUTTY



1 TITANIUM