



RIVIERA

TECHNICAL ASPECT

Construction: Wilton Flatwoven

Composition: 100% Outdoor Recycled PET

Secondary Backing: P.P & Latex

Total Height: 4.0mm

Total Weight: 2.450g/m²

Roll Width: 400cm

Use: Indoor/Outdoor



waterproof



for indoor
& outdoor



UV proof



bleach
cleanable



Level 1, 68 Sophia Street
Surry Hills, NSW 2010

1800 239 237 (1800 2FYBER)
info@fyber.com.au
@fyber_flooring

www.fyber.com.au

FYBER



COCONUT



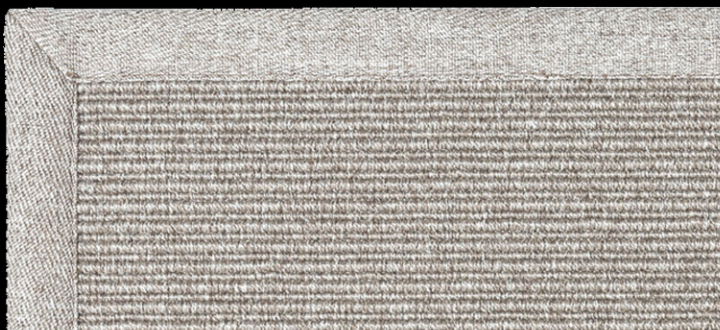
LICORICE



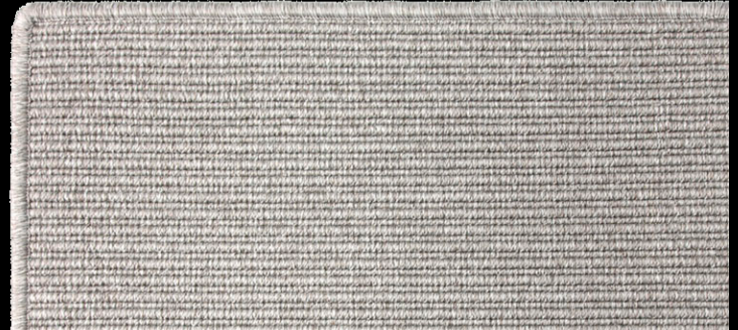
LINEN



OAT



RUSTIC BORDER NARROW



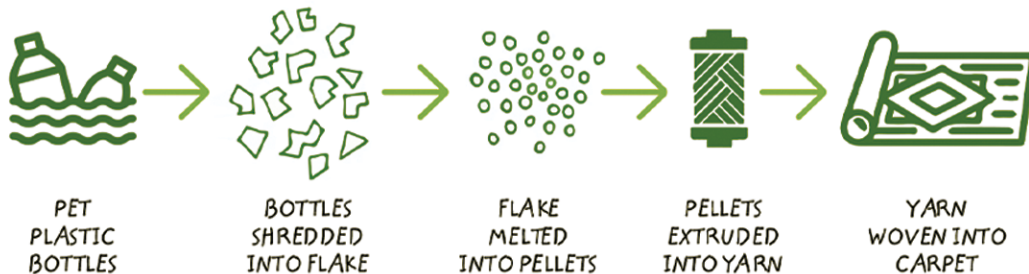
WHIPPED EDGE

MADE WITH RECYCLED PLASTIC BOTTLES: SUSTAINABLE CARPET FOR OUTDOOR LIVING



- **Environmentally friendly:** Billions of plastic bottles go into landfills every year, taking up to 700 years for just one plastic bottle to break down. As plastic decays, it can give off chemicals that get into our water and air and can make people, plants, and animals sick... At Fyber we want to do our bit in giving back to the planet and recycled PET plastic bottles make up the main raw materials from our Hamptons collection providing a new life to recycled materials.
- **Suitable for indoor/outdoor use:** Our Hamptons collection has the durability and versatility required of indoor/outdoor use without sacrificing beauty in its design. Our rugs are made from water-resistant yarns and comply with the tests of UV resistance and abrasiveness to ensure optimal performance in all seasons, making them the perfect choice to enhance the function of outdoor areas.
- **Easy cleaning:** Made with a highly engineered recycled PET yarn, the Hamptons collection offers superior performance and is very easy to look after without the need for specialist cleaning products, even bleach cleanable for the most difficult stains.
- **Natural appearance:** The Hamptons carpets & rugs combine technology and craftsmanship, drawing inspiration from traditional sisal and seagrass flatwoven rugs and reproducing the visual texture of these natural fibres, but additionally our carpets are soft to the touch, long-lasting and very easy to maintain.

The Process:



GIVING NEW LIFE TO OVER 130 BOTTLES PER M2 OF CARPET

Compared to making what's called virgin PES carpet, our Hamptons collection offsets using new petroleum, emitting fewer greenhouse gases and conserving water and energy in the process. Just one square meter of Hamptons can contain over 130 recycled plastic bottles of 33 cl.