



SEASIDE

TECHNICAL ASPECT

Construction: Flatwoven Loop Pile

Composition: 100% Wool

Secondary Backing: Natural Jute

Stitches per m²: 73.500m²

Total Height: 7.0mm

Pile Weight: 700g/m²

Total Weight: 2.680g/m²

Roll Width: 400cm

Use: Medium Duty

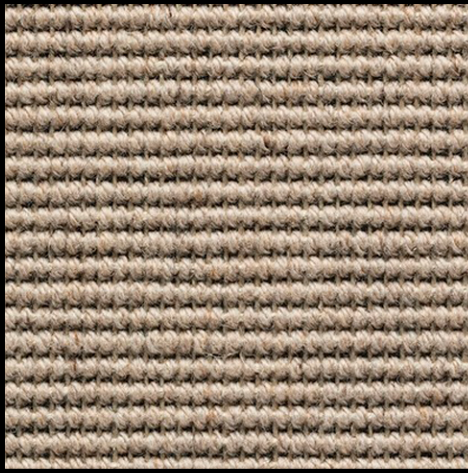


Level 1, 68 Sophia Street
Surry Hills, NSW 2010

1800 239 237 (1800 2FYBER)
info@fyber.com.au
@fyber_flooring

www.fyber.com.au

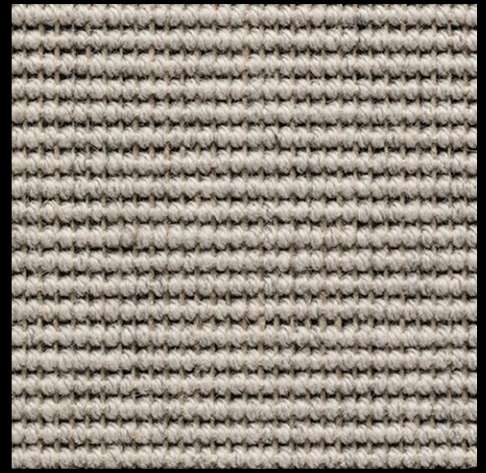
FYBER



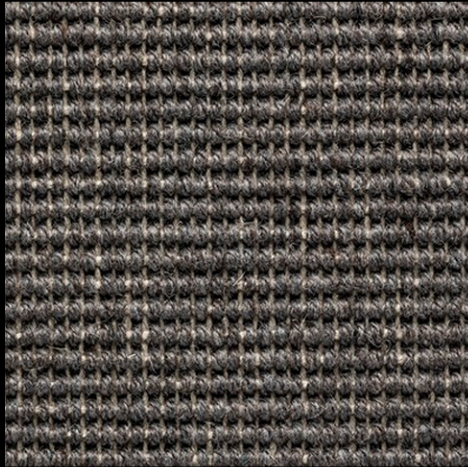
05 SAND



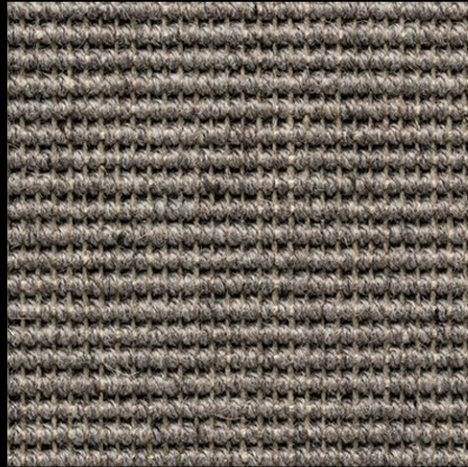
10 SEAGRASS



35 SHELL



45 SLATE



40 STONE